

PageWorks/Pro 1100 PageWorks/Pro 1100L

PARTS MANUAL



Part Number
1750042-002A

PREFACE

1. The part numbers listed in Parts Manual are those which were assigned to the parts making up the machine at the time machine was originally introduced onto the market.
2. Parts whose INDEX numbers are shown white against a black background in the illustration are those to be used in only certain market areas. These part numbers are given in the lower half part of the list section. Check the SFIX No. listed in SFIX CHART on page II to find which part number is applicable to your own area.
3. Parts whose INDEX numbers are shown black against a white background in the illustration are those to be used in all market areas. These parts are listed on the upper half part of the list section.
4. If "NS" follows a part number given in the list section, it indicates that we do not keep a stock of the part. The part is not required for ordinary service jobs, either.
5. If "RP" is shown in the REC column of the list section, it indicates that the part is functionally important.
6. In the exploded views in this Parts Manual the parts (Screws & Washes, etc...) which are indicated with a "four-digit" numbers are listed in numerical order in the section "SCREWS AND WASHERS". Please check these "four-digit" numbers with the part numbers ("ten-digit" numbers) which should be used for ordering the part.
7. All part numbers consist of "ten-digit" which should all be quoted when ordering a part. The price of parts can be obtained by referring to the "Parts Price List" which is separately issued.
8. All information contained in this parts manual is subject to change.

Trademark Acknowledgments

PagePro™ and PageWorks™ are trademarks of Minolta.

Fine-ART, Fine Micro Toning and Minolta logo are trademarks of Minolta Co., Ltd.

QMS and the QMS logo are registered trademarks of QMS, Inc.

PCL is a registered trademark of Hewlett-Packard Company.

Centronics is a registered trademark of Centronics Inc.

MS-DOS, Microsoft, Windows, and Windows NT are registered trademarks of Microsoft Corporation.

IBM is a registered trademark of International Business Machines Corporation.

All other brand or product names are trademarks or registered trademarks of their respective companies or organizations.

Copyright © 2000 MINOLTA-QMS, Inc. All rights reserved. The MINOLTA-QMS logo is a trademark of MINOLTA-QMS, Inc.

SFIX CHART

SFIX No.	COUNTRY	VOLTAGE	FREQUENCY (Hz)	PAPER SIZE	SFIX No.	COUNTRY	VOLTAGE	FREQUENCY (Hz)	PAPER SIZE
201	EUROPE(PW/Pro 1100)	220	50	METRIC	301	USA(PW/Pro 1100)	120	60	INCH
202	EUROPE(PW/Pro 1100L)	220	50	METRIC	302	USA(PW/Pro 1100L)	120	60	INCH

CONTENTS

1. HOUSING 1

2. PAPER EXIT SECTION 3

3. PAPER TAKE UP SECTION 5

4. FUSING UNIT 7

5. DRIVE/TRANSFER UNIT 9

6. FRAMES 11

7. ELECTRICAL COMPONENTS 13

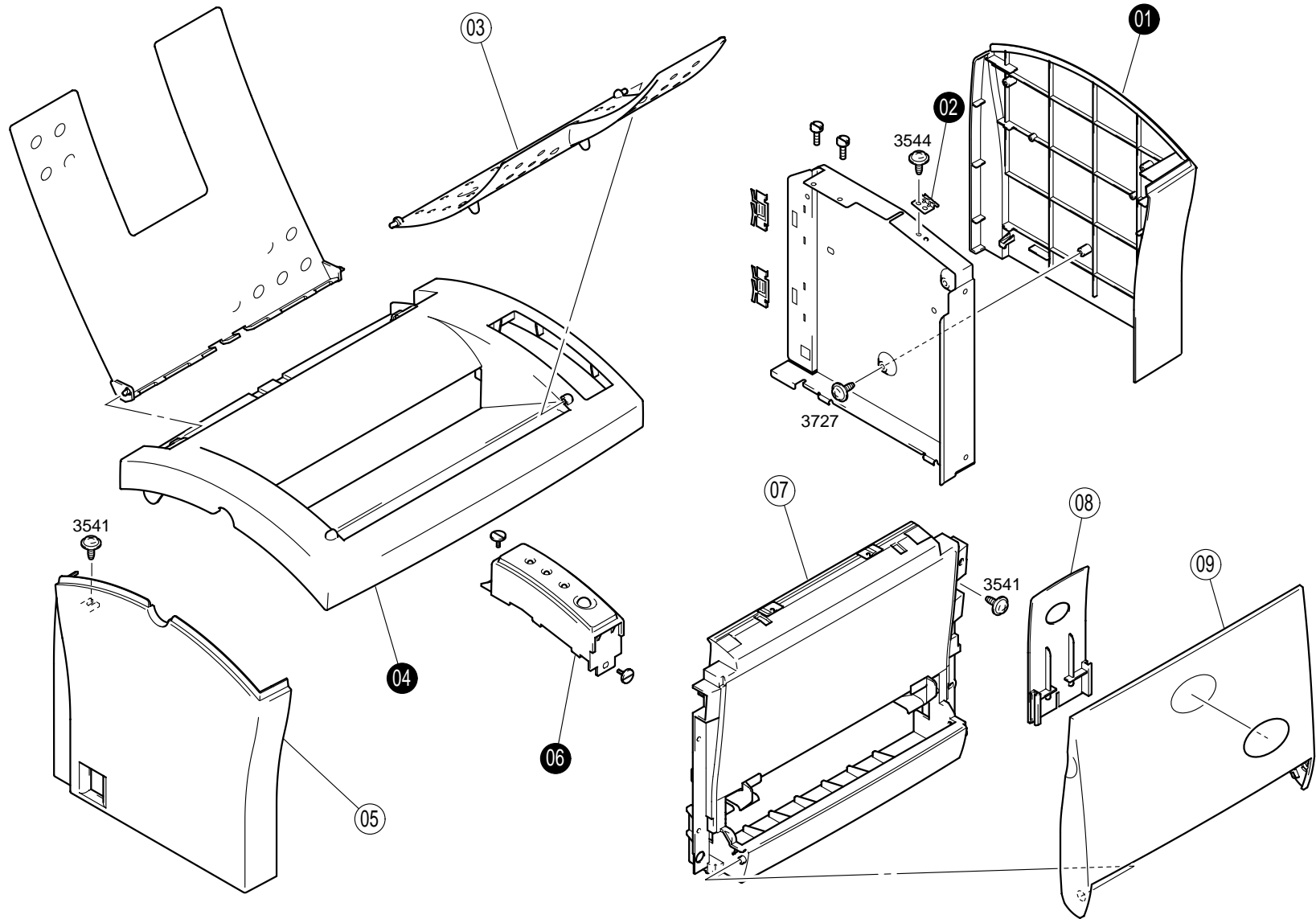
8. 2ND PAPER TAKE-UP(A)(OPTION) 15

9. 2ND PAPER TAKE-UP(B)(OPTION) 17

10. SCREWS AND WASHERS 19

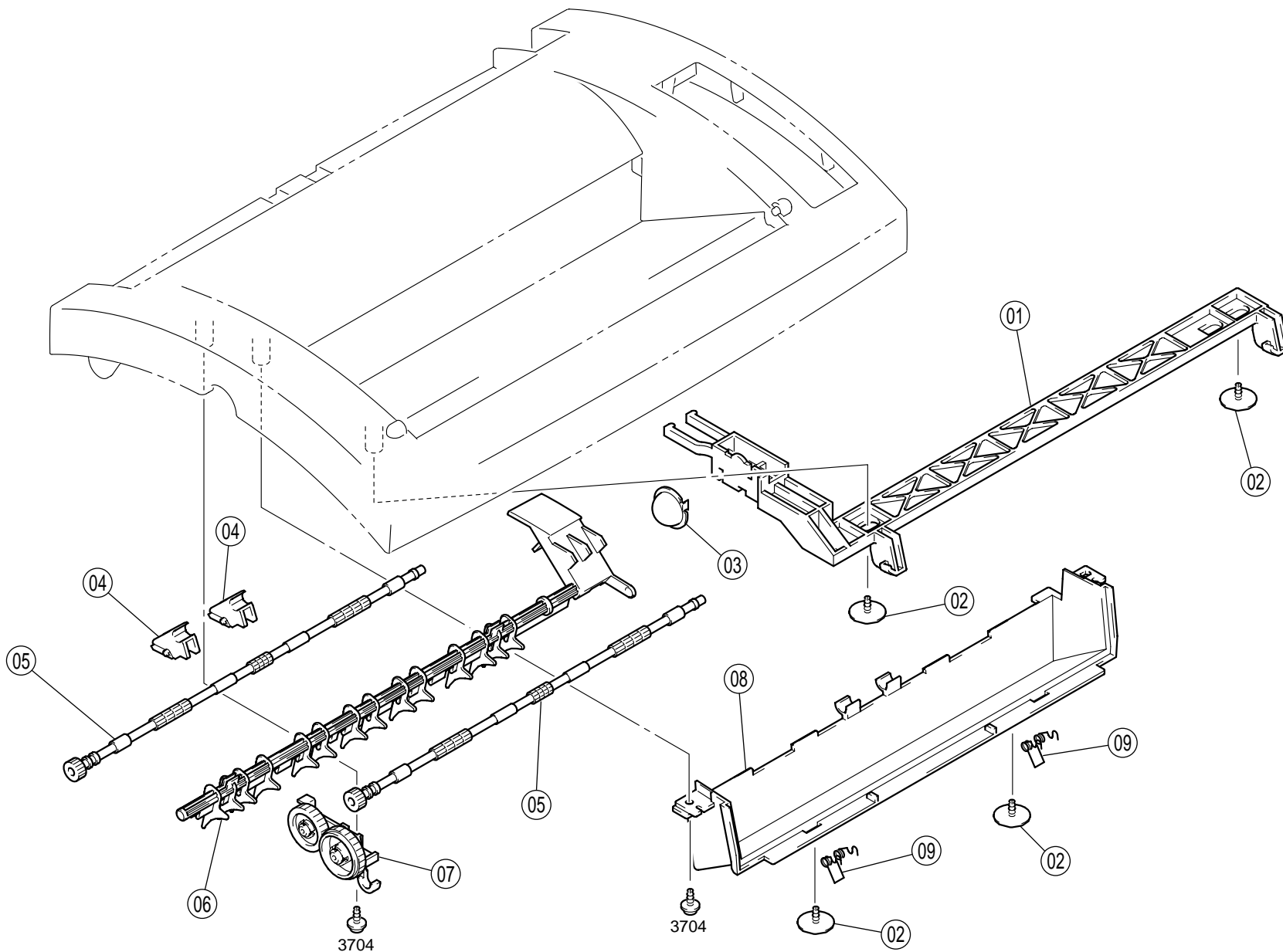
11. NUMERICAL INDEX 20

FEBRUARY 2000



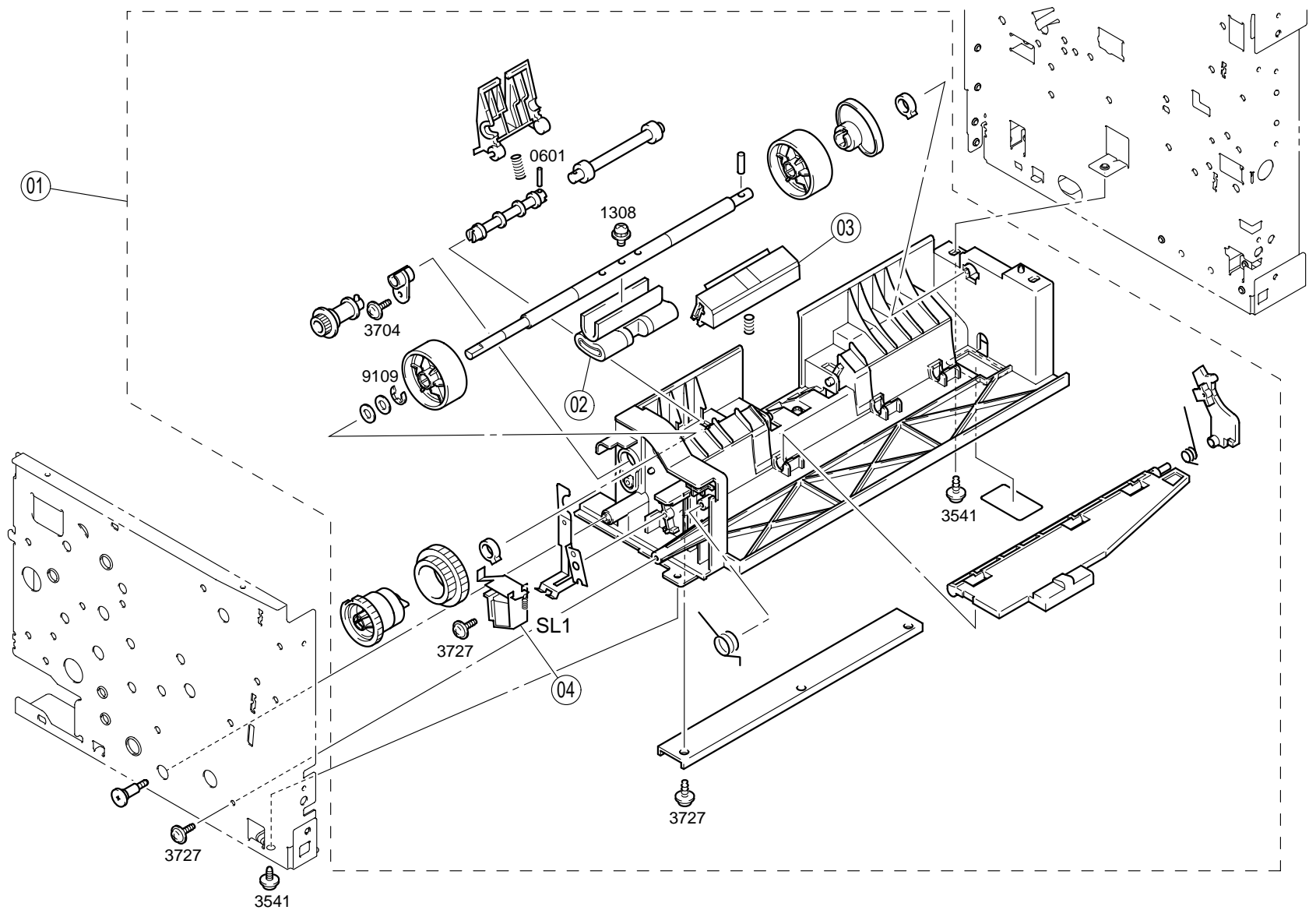
INDEX	PART NO.	PART NAME	REC	QTY	INDEX	PART NO.	PART NAME	REC	QTY
03	4121-1007-02	TRAY		1					
05	4121-1010-04	LEFT COVER		1					
07	4121-0763-01	FRONT COVER ASSY	RP	1					
08	4121-1014-01	TRAY		1					
09	4121-1008-02	TRAY		1					

INDEX	PART NO.	PART NAME	REC	QTY	SFIX
01	4121-1021-01	RIGHT COVER		1	302
01	4121-1022-01	RIGHT COVER		1	202
01	4121-1111-05	RIGHT COVER		1	201
01	4121-1112-01	RIGHT COVER		1	301
02	4121-2314-02	EARTH GROUND		1	201, 301
04	4121-0758-01	TOP COVER		1	202, 302
04	4121-0761-01	TOP COVER		1	201, 301
06	4121-0451-03	CONTROL PANEL	RP	1	202, 302
06	4121-0452-03	CONTROL PANEL	RP	1	201, 301



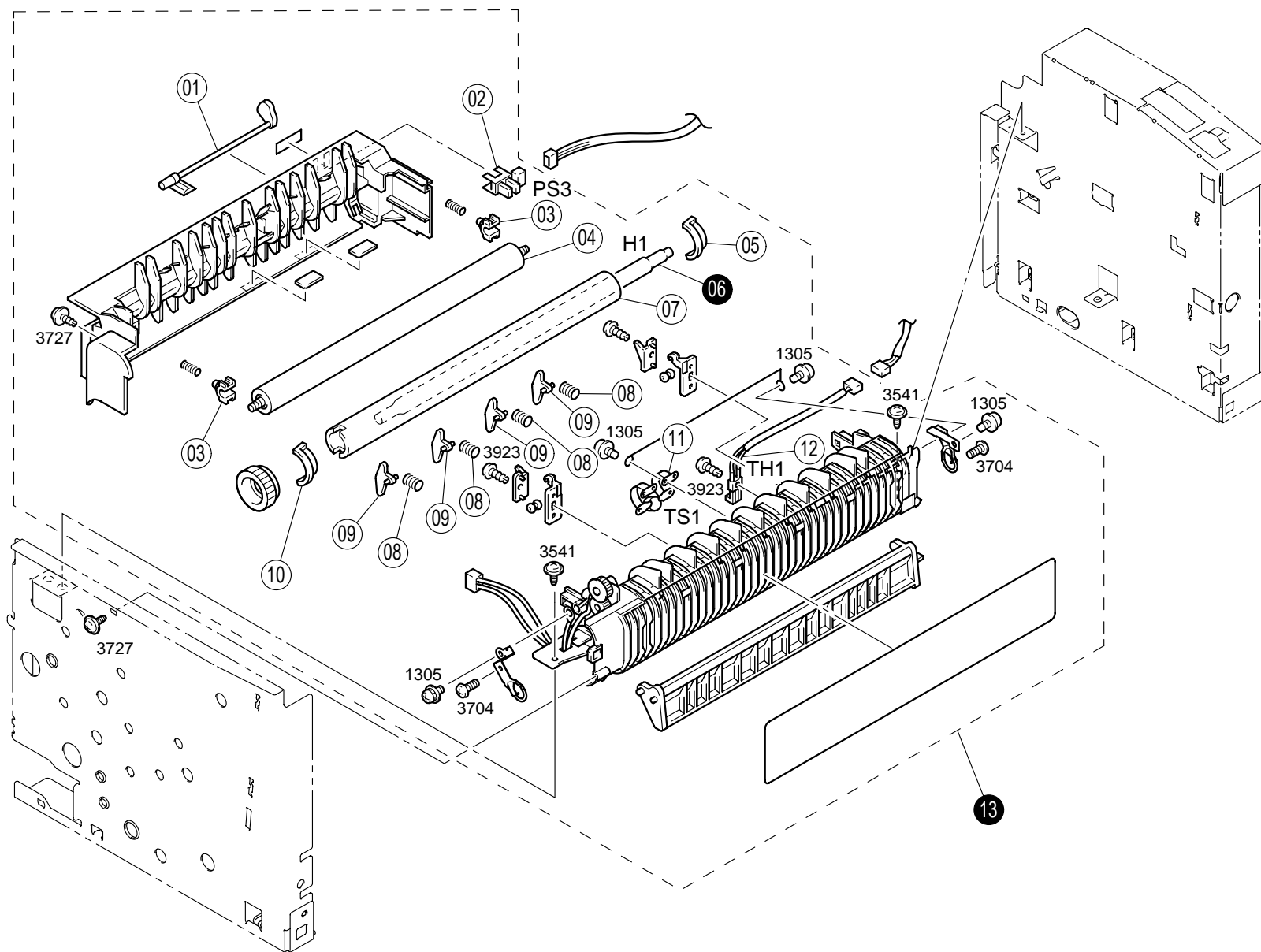
INDEX	PART NO.	PART NAME	REC	QTY	INDEX	PART NO.	PART NAME	REC	QTY
01	4121-1004-02	LEVER		1					
02	4121-2003-02	SHOULDER SCREW		4					
03	4121-1053-01	BUTTON		1					
04	4121-3701-01	GUIDE		2					
05	4121-3730-02	ROLLER	RP	2					
06	4121-3710-02	GUIDE		1					
07	4121-0752-01	GEAR ASSY		1					
08	4121-1002-02	COVER		1					
09	4121-2020-01	TORSION SPRING		2					

INDEX	PART NO.	PART NAME	REC	QTY	SFIX

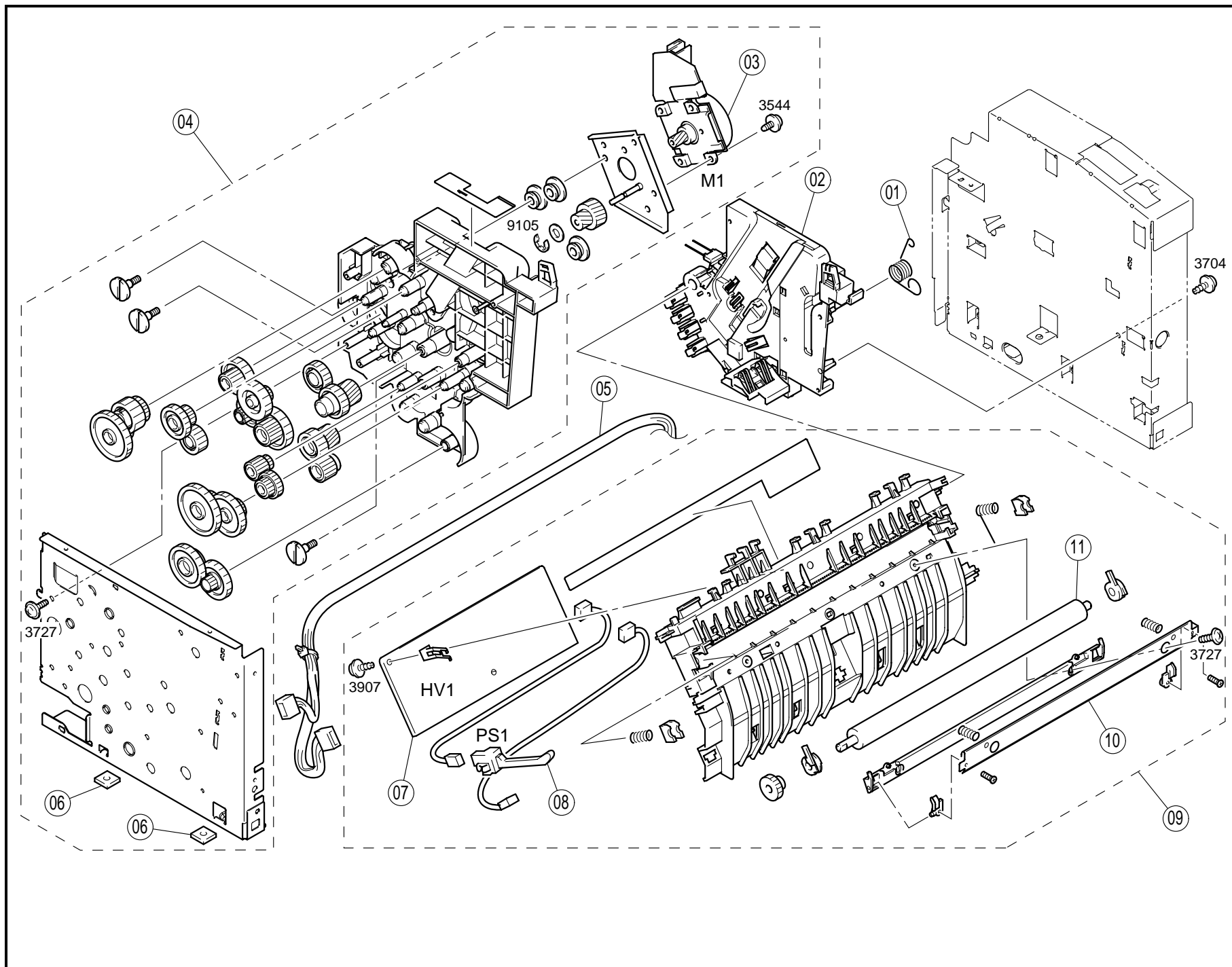


INDEX	PART NO.	PART NAME	REC	QTY	INDEX	PART NO.	PART NAME	REC	QTY
01	4121-0331-03	PAPER PICK UNIT	RP	1					
02	4121-3001-01	ROLLER	RP	1					
03	4121-0753-01	SEPARATOR PAD	RP	1					
04	4109-6206-01	SOLENOID TAKE-UP (SL1)		1					

INDEX	PART NO.	PART NAME	REC	QTY	SFIX

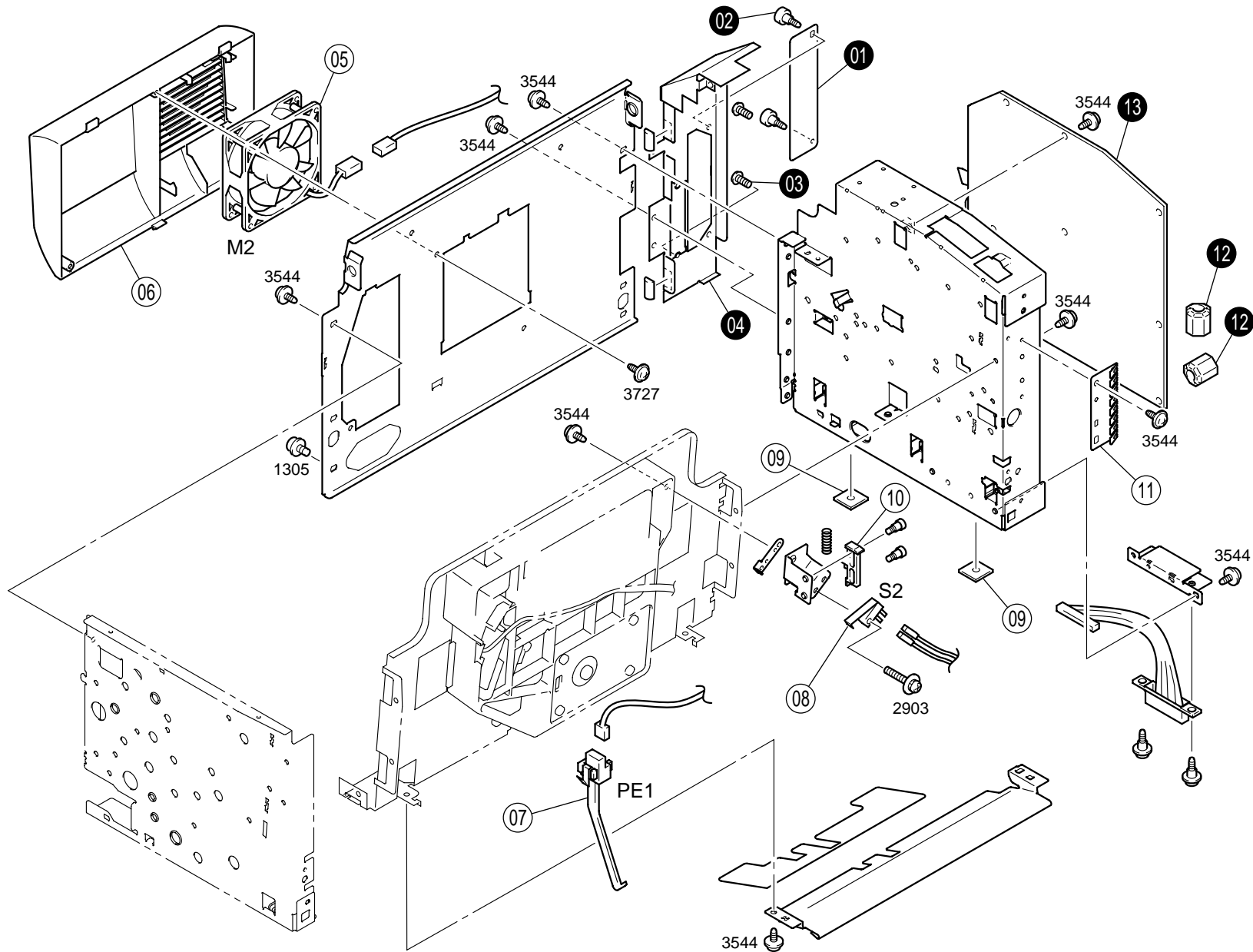


INDEX	PART NO.	PART NAME	REC	QTY	INDEX	PART NO.	PART NAME	REC	QTY
01	4121-5518-01	ACTUATOR		1					
02	9335-1410-31	PHOTO INTERRUPTER EXIT (PS3)		1					
03	4110-5511-01	BUSHING		2					
04	4109-5502-01	ROLLER		1					
05	4122-5522-01	BUSHING		1					
07	4121-5501-01	FUSING ROLLER		1					
08	4121-5516-01	PRESSURE SPRING		4					
09	4109-5533-01	SEPARATOR		4					
10	4109-5521-01	BUSHING		1					
11	4121-6302-01	THERMAL SWITCH FUSING (TS1)		1					
12	4121-6701-01	THERMISTOR FUSING (TH1)		1					
INDEX	PART NO.	PART NAME	REC	QTY	SFIX				
06	4109-6502-01	TUBE LAMP FUSING (H1)		1	301, 302				
06	4109-6503-01	TUBE LAMP FUSING (H1)		1	201, 202				
13	4121-0352-02	FUSING UNIT	RP	1	301, 302				
13	4121-0353-02	FUSING UNIT	RP	1	201, 202				



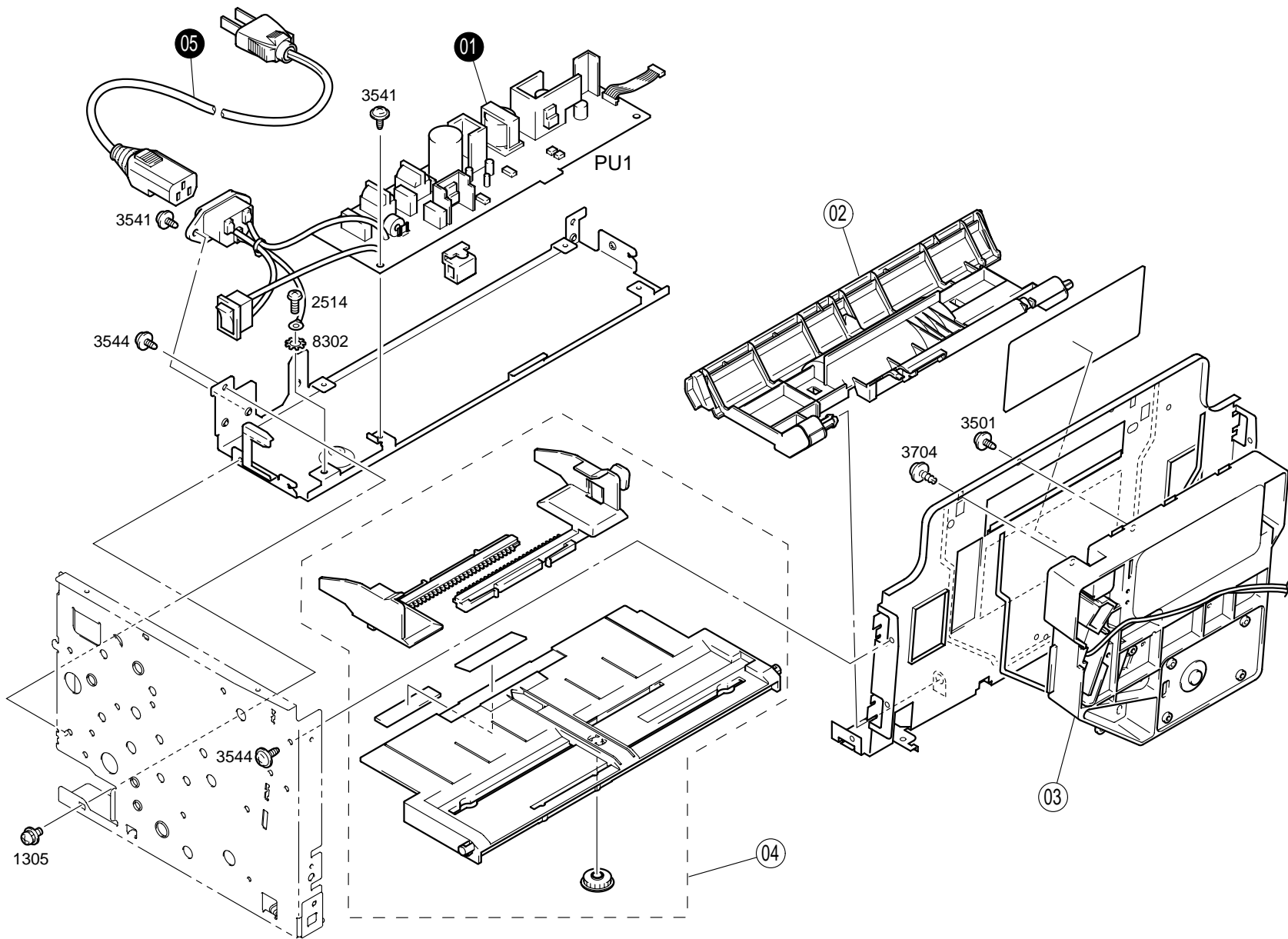
INDEX	PART NO.	PART NAME	REC	QTY	INDEX	PART NO.	PART NAME	REC	QTY
01	4121-2013-01	TORSION SPRING		1					
02	4121-0755-01	FRAME ASSY	RP	1					
03	4121-6101-03	MOTOR		1					
04	4121-0301-02	DRIVE UNIT	RP	1					
05	4121-6802-01	WIRE HARNESS ASSY		1					
06	4121-2015-01	RUBBER FOOT		2					
07	4121-6203-03	HV TRANSFORMER		1					
08	4109-6301-01	SWITCH		1					
09	4121-0311-02	TRANSFER UNIT	RP	1					
10	4121-4132-01	GUIDE PLATE		1					
11	4109-4103-01	ROLLER	RP	1					

INDEX	PART NO.	PART NAME	REC	QTY	SFIX



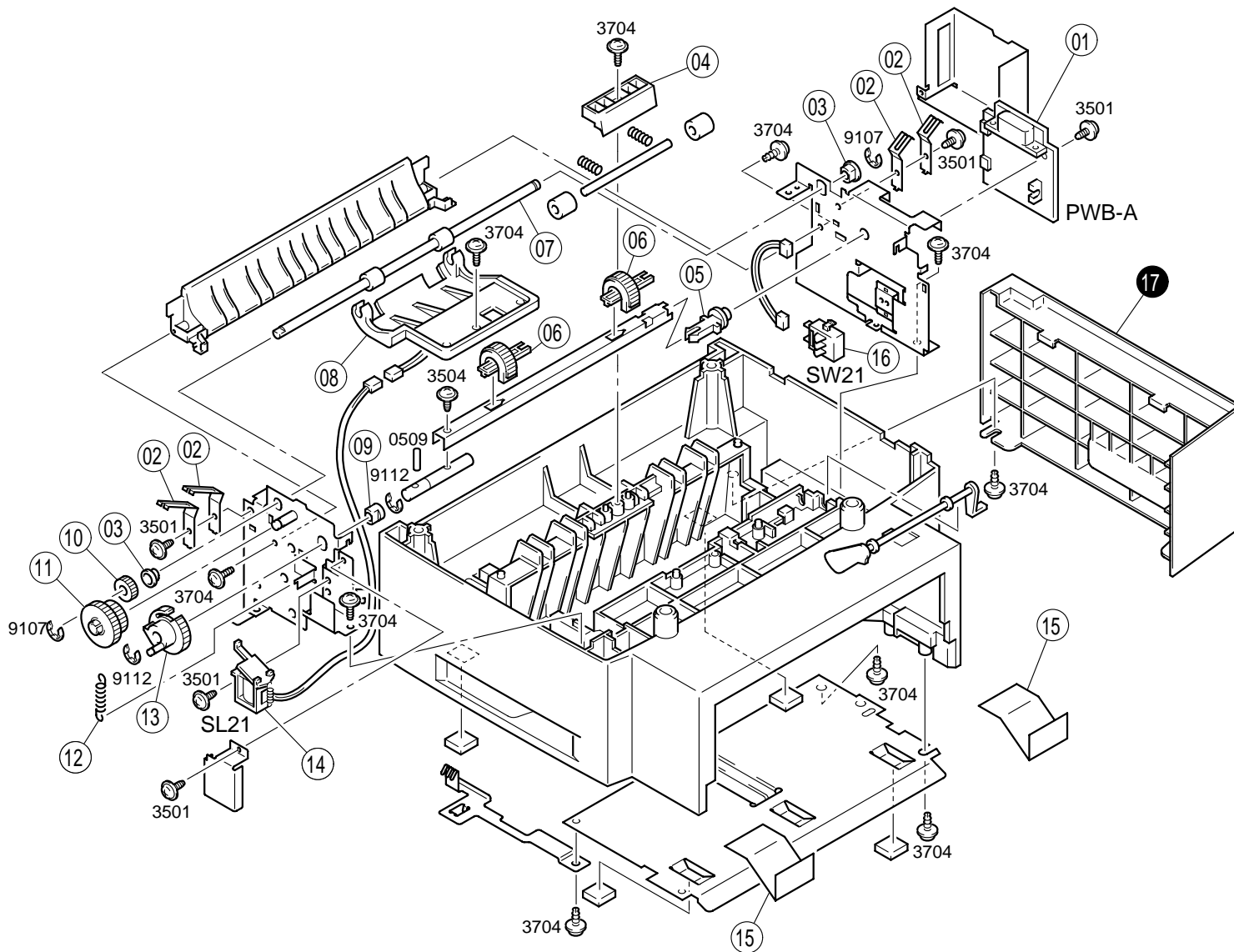
INDEX	PART NO.	PART NAME	REC	QTY	INDEX	PART NO.	PART NAME	REC	QTY
05	4121-6103-03	FAN MOTOR COOLING (M2)		1					
06	4121-1252-03	DUCT		1					
07	4109-6304-01	SWITCH EMPTY (PE1)	RP	1					
08	4109-6305-01	SWITCH INTERLOCK (S2)	RP	1					
09	4121-2015-01	RUBBER FOOT		2					
10	4121-2308-01	LEVER		1					
11	4121-2359-01	EARTH GROUND		1					

INDEX	PART NO.	PART NAME	REC	QTY	SFIX
01	4121-2371-01	COVER		1	201, 301
02	4121-2372-01	SHOULDER SCREW		2	201, 301
03	4121-2311-01	SCREW		2	202, 302
04	4121-2360-01	BRACKET		1	202, 302
04	4121-2370-02	BRACKET		1	201, 301
12	0816-6201-01	FERRITE CORE		2	202
13	4121-0106-02	PWB ASSY	RP	1	202, 302
13	4121-0107-05	PWB ASSY	RP	1	201, 301



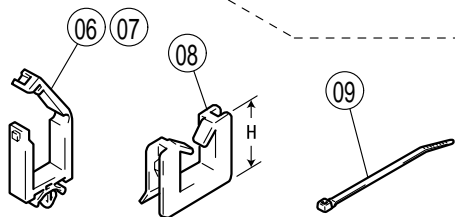
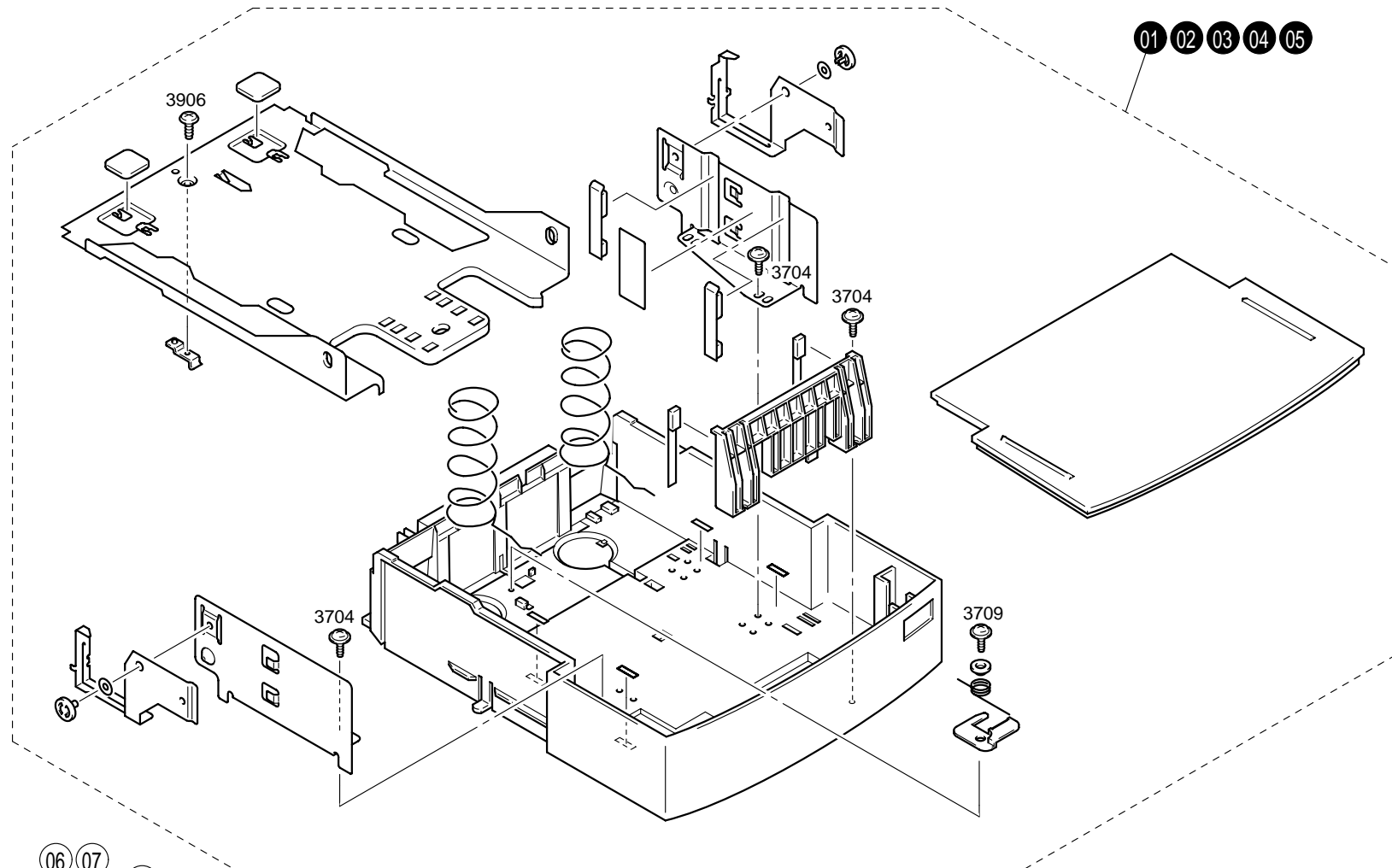
INDEX	PART NO.	PART NAME	REC	QTY	INDEX	PART NO.	PART NAME	REC	QTY
02	4121-3020-04	GUIDE		1					
03	4192-0551-01	PRINT HEAD UNIT		1					
04	4121-0361-03	GUIDE ASSY		1					

INDEX	PART NO.	PART NAME	REC	QTY	SFIX
01	4121-6201-04	POWER SUPPLY POWER (PU1)	RP	1	301, 302
01	4121-6202-04	POWER SUPPLY POWER (PU1)	RP	1	201, 202
05	4121-6751-01	POWER CORD		1	201, 202
05	9381-4910-91	POWER CORD		1	301, 302












INDEX	PART NO.	PART NAME	REC	QTY	INDEX	PART NO.	PART NAME	REC	QTY
01	4165-0101-01	PW BOARD-A (PWB-A)	RP	1					
02	4165-3840-02	PLATE		4					
03	0928-3033-01	BUSHING		2					
04	4165-3833-01	BRACKET		1					
05	4498-3334-01	SHAFT		1					
06	4498-3332-01	ROLLER		2					
07	4165-3818-01	ROLLER		1					
08	4165-3820-02	GUIDE		1					
09	1200-3131-07	BUSHING		1					
10	4165-3831-01	GEAR 15T		1					
11	4165-3824-01	GEAR 26/32T	RP	1					
12	4165-3816-01	TENSION SPRING	RP	1					
13	4165-3815-01	GEAR 34T	RP	1					
14	0993-6204-02	SOLENOID (SL21)		1					
15	4165-3847-01	GUIDE		2					
16	9332-3710-11	SWITCH(DETECT) (SW21)	RP	1					

INDEX	PART NO.	PART NAME	REC	QTY	SFIX
17	4148-3808-02	COVER		1	202, 302
17	4148-3809-02	COVER		1	201, 301



INDEX	PART NO.	PART NAME	REC	QTY	INDEX	PART NO.	PART NAME	REC	QTY
06	9384-1310-11	WIRING SADDLE 5.2H		1					
07	9384-1810-91	WIRING SADDLE		3					
08	9384-2010-21	EDGE COVER 8.5H		2					
09	9384-1821-41	CABLE TIE		5					

INDEX	PART NO.	PART NAME	REC	QTY	SFIX
01	4148-0755-01	CASSETTE ASSY A4	RP	1	201, 202
02	4148-0756-01	CASSETTE ASSY LETTER	RP	1	301, 302
03	4148-0757-01	CASSETTE ASSY LEGAL	RP	1	301, 302
04	4148-0758-01	CASSETTE ASSY B5	RP	1	201, 202
05	4148-0759-01	CASSETTE ASSY EXE	RP	1	301, 302

INDEX	PART NO.	PART NAME	ILLUST	INDEX	PART NO.	PART NAME	ILLUST	INDEX	PART NO.	PART NAME	ILLUST
0509 0601	9752-2012-50 9751-3010-50	PIN									
1305 1308	9646-0306-13 9646-0308-13	SCREW									
2514	9642-0406-21	SCREW									
2903	9646-2312-13	SCREW									
3501 3504 3541 3544	9735-0306-13 9735-0308-13 9735-0308-14 9735-0306-14	TAPPING SCREW									
3704 3709 3727	9739-0308-13 9739-0310-13 9739-0308-14	TAPPING SCREW									
3906 3907 3923	9742-0306-13 9742-0308-13 9742-0310-13	TAPPING SCREW									
8302	9712-0400-13	WASHER									
9105 9107 9109 9112	9721-0300-01 9721-0400-01 9721-0500-01 9721-0600-01	RETAINING RING									

PART NO.	FIG.	INDEX	QTY		PART NO.	FIG.	INDEX	QTY		PART NO.	FIG.	INDEX	QTY		PART NO.	FIG.	INDEX	QTY		
0816-6201-01	06	12	2		4121-6302-01	04	11	1												
0928-3033-01	08	03	2		4121-6701-01	04	12	1												
0993-6204-02	08	14	1		4121-6751-01	07	05	1												
1200-3131-07	08	09	1		4121-6802-01	05	05	1												
4109-4103-01	05	11	1		4122-5522-01	04	05	1												
4109-5502-01	04	04	1		4148-0755-01	09	01	1												
4109-5521-01	04	10	1		4148-0756-01	09	02	1												
4109-5533-01	04	09	4		4148-0757-01	09	03	1												
4109-6206-01	03	04	1		4148-0758-01	09	04	1												
4109-6301-01	05	08	1		4148-0759-01	09	05	1												
4109-6304-01	06	07	1		4148-3808-02	08	17	1												
4109-6305-01	06	08	1		4148-3809-02	08	17	1												
4109-6502-01	04	06	1		4165-0101-01	08	01	1												
4109-6503-01	04	06	1		4165-3815-01	08	13	1												
4110-5511-01	04	03	2		4165-3816-01	08	12	1												
4121-0106-02	06	13	1		4165-3818-01	08	07	1												
4121-0107-05	06	13	1		4165-3820-02	08	08	1												
4121-0301-02	05	04	1		4165-3824-01	08	11	1												
4121-0311-02	05	09	1		4165-3831-01	08	10	1												
4121-0331-03	03	01	1		4165-3833-01	08	04	1												
4121-0352-02	04	13	1		4165-3840-02	08	02	4												
4121-0353-02	04	13	1		4165-3847-01	08	15	2												
4121-0361-03	07	04	1		4192-0551-01	07	03	1												
4121-0451-03	01	06	1		4498-3332-01	08	06	2												
4121-0452-03	01	06	1		4498-3334-01	08	05	1												
4121-0752-01	02	07	1		9332-3710-11	08	16	1												
4121-0753-01	03	03	1		9335-1410-31	04	02	1												
4121-0755-01	05	02	1		9381-4910-91	07	05	1												
4121-0758-01	01	04	1		9384-1310-11	09	06	1												
4121-0761-01	01	04	1		9384-1810-91	09	07	3												
4121-0763-01	01	07	1		9384-1821-41	09	09	5												
4121-1002-02	02	08	1		9384-2010-21	09	08	2												
4121-1004-02	02	01	1																	
4121-1007-02	01	03	1																	
4121-1008-02	01	09	1																	
4121-1010-04	01	05	1																	
4121-1014-01	01	08	1																	
4121-1021-01	01	01	1																	
4121-1022-01	01	01	1																	
4121-1053-01	02	03	1																	
4121-1111-05	01	01	1																	
4121-1112-01	01	01	1																	
4121-1252-03	06	06	1																	
4121-2003-02	02	02	4																	
4121-2013-01	05	01	1																	
4121-2015-01	05	06	2																	
4121-2015-01	06	09	2																	
4121-2020-01	02	09	2																	
4121-2308-01	06	10	1																	
4121-2311-01	06	03	2																	
4121-2314-02	01	02	1																	
4121-2359-01	06	11	1																	
4121-2360-01	06	04	1																	
4121-2370-02	06	04	1																	
4121-2371-01	06	01	1																	
4121-2372-01	06	02	2																	
4121-3001-01	03	02	1																	
4121-3020-04	07	02	1																	
4121-3701-01	02	04	2																	
4121-3710-02	02	06	1																	
4121-3730-02	02	05	2																	
4121-4132-01	05	10	1																	
4121-5501-01	04	07	1																	
4121-5516-01	04	08	4																	
4121-5518-01	04	01	1																	
4121-6101-03	05	03	1																	
4121-6103-03	06	05	1																	
4121-6201-04	07	01	1																	
4121-6202-04	07	01	1																	
4121-6203-03	05	07	1																	

